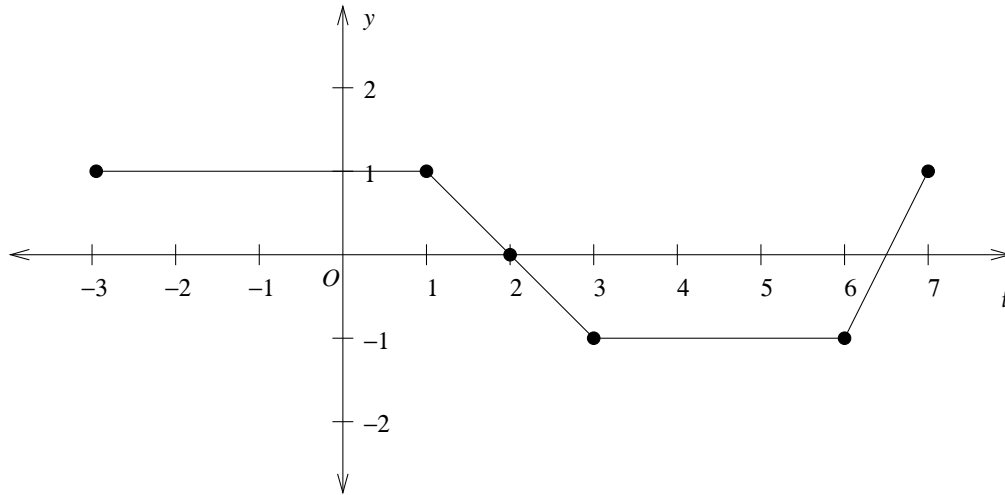


Signed Area Worksheet

1. Consider the function f whose graph is given.



Evaluate each of the following integrals using the graph of f .

(a) $\int_{-3}^0 f(t) dt$

(c) $\int_0^3 f(t) dt$

(e) $\int_1^5 f(t) dt$

(g) $\int_5^1 f(t) dt$

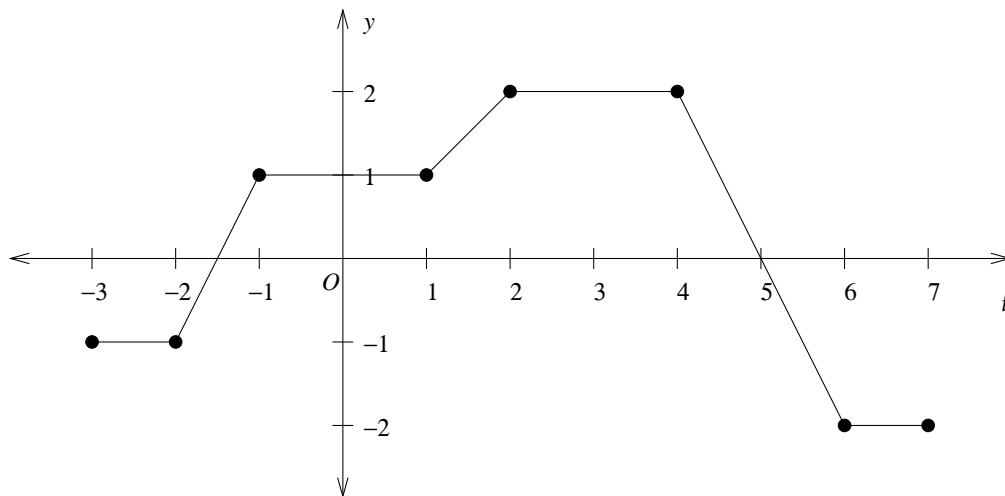
(b) $\int_{-1}^1 f(t) dt$

(d) $\int_3^6 f(t) dt$

(f) $\int_{-2}^7 f(t) dt$

(h) $\int_4^{-1} f(t) dt$

2. Consider the function g whose graph is given.



Evaluate each of the following integrals using the graph of g .

(a) $\int_{-3}^{-2} g(x) dx$

(c) $\int_{-1}^3 g(x) dx$

(e) $\int_6^7 g(x) dx$

(g) $\int_1^{-3} g(x) dx$

(b) $\int_{-3}^0 g(x) dx$

(d) $\int_3^6 g(x) dx$

(f) $\int_{-3}^7 g(x) dx$

(h) $\int_6^3 g(x) dx$