

# Actuarial Mathematics at Kent State University

Darci L. Kracht  
Professor

Actuarial Mathematics Program Coordinator

Department of Mathematical Sciences  
Kent State University

September 30, 2021

# What is an Actuary?

Actuaries are professionals who

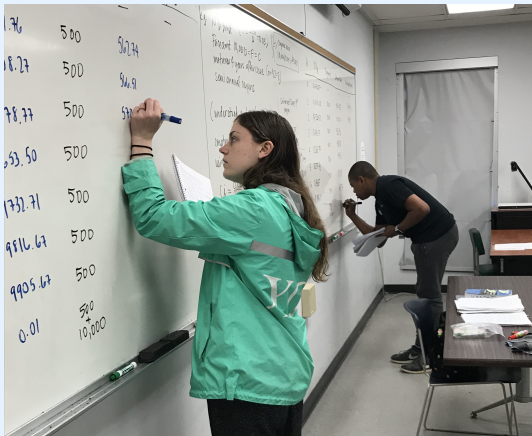
- ▶ Manage risk
- ▶ Predict the likelihood of future events and model the financial impact of future scenarios
- ▶ Find creative ways to mitigate the undesirable effects of future events

Employment

- ▶ Most are employed in the insurance and financial industries
- ▶ Others work in the transportation, environmental, medical, and manufacturing industries and in government
- ▶ Number of jobs in this field is increasing at a rate of 18% (much faster than average)
- ▶ 2016 median annual salary of actuaries was \$100,610
- ▶ Always highly ranked in job satisfaction surveys

# Actuarial Mathematics at Kent State University

- ▶ BS in Actuarial Mathematics beginning with the 2019-20 catalog
- ▶ Previously Concentration under BS in Mathematics
- ▶ **If you are on an old catalog, your requirements have NOT changed.**



## Sequencing Recommendations: General Principles

- ▶ Max 3 MATH courses per semester
- ▶ Spread Kent Core courses across whole 4 years
- ▶ Spread Business courses, but start early if considering minor or double major
- ▶ CS requirement early
- ▶ Summer MATH classes very challenging
- ▶ Remember that all MATH prereqs require C or better (really should have B or better)
- ▶ Two issues in prerequisites:
  - ▶ Content
  - ▶ Mathematical maturity



# Sequencing Recommendations

- ▶ Take in sequence without skipping a semester:
  - ▶ MATH 12002 Analytic Geometry and Calculus I
  - ▶ MATH 12003 Analytic Geometry and Calculus II
  - ▶ MATH 22005 Analytic Geometry and Calculus III
  - ▶ MATH 32044 Ordinary Differential Equations (“Calc IV”)
  
- ▶ Can take concurrently with MATH 12003 (Calc II)
  - ▶ MATH 21001 Linear Algebra
  - ▶ MATH 20011 Decision Making Under Uncertainty
  
- ▶ Can take concurrently with MATH 22005 (Calc III)
  - ▶ MATH 30055 Mathematical Theory of Interest
  - ▶ MATH 31011 Proofs in Discrete Mathematics

## Highlights of Course Timing

- ▶ MATH 30055 (Theory of Interest) is offered in Fall
  - ▶ Actuarial Math students should take it Fall of sophomore year
  - ▶ Then take Exam FM in spring
  
- ▶ MATH 40011 (Probability) is offered both Fall and Spring
  - ▶ Actuarial Math students should take it Spring of sophomore year
  - ▶ Then take Exam P in summer
  
- ▶ MATH 40055-6 (Act Math I-II) can then be taken junior year
  - ▶ Prereqs are MATH 30055 and MATH 40011
  - ▶ Then take Exam LTAM following fall

## Sequencing Recommendations

- ▶ MATH 40059 Stochastic Actuarial Models is probably hardest course in Actuarial Math curriculum— take Spring of senior year
  
- ▶ ECON 32050 Applied Econometrics I
  - ▶ Prerequisites
    - ▶ MATH 12002 (Calc I)
    - ▶ ECON 22060 (Microeconomics)
    - ▶ MIS 24056 (Business Analytics I): typically waived for our students who have taken MATH 20011 or MATH 40011-12
  - ▶ ECON 32051 Applied Econometrics II is a good course for our students, so maybe take ECON 32050 earlier than indicated on roadmap

## See your advisors each semester!

- ▶ Professional Advisor: College of Arts & Sciences
  - ▶ University and College graduation requirements
  - ▶ Can lift your pin to register for classes
- ▶ Faculty Advisor: Dr. Kracht: [drkracht.youcanbook.me](http://drkracht.youcanbook.me)
  - ▶ Mathematics requirements
  - ▶ Advice on which course to take when
  - ▶ Can lift your pin to register for classes
- ▶ Additional advisors for other majors, minors
  - ▶ How many courses can be double-counted?

## Typical/Recommended Second Major or Minor

- ▶ Finance
- ▶ Economics
- ▶ Data Analytics
- ▶ Computer Science
- ▶ Insurance Studies
- ▶ Foreign language
- ▶ Anything the you love!

# Credentialing of Actuaries in the US

Society of Actuaries: [www.soa.org](http://www.soa.org)

- ▶ Associate of the Society of Actuaries (ASA)
- ▶ Fellow of the Society of Actuaries (FSA)
- ▶ Chartered Enterprise Risk Analyst (CERA)

Casualty Actuarial Society: [www.casact.org](http://www.casact.org)

- ▶ Associate of the Casualty Actuarial Society (ACAS)
- ▶ Fellow of the Casualty Actuarial Society (FCAS)
- ▶ Chartered Enterprise Risk Analyst (CERA)

Be An Actuary: [beanactuary.org](http://beanactuary.org)

# SOA Credentialing: ASA (Associate of the Society of Actuaries)

Current ASA requirements:

Exam P–Probability

Exam FM–Financial Mathematics

Exam IFM–Investment and Financial Markets (*last sitting Nov 2022*)

Exam LTAM–Long-Term Actuarial Mathematics (*being changed*)

Exam STAM–Short-Term Actuarial Mathematics (*being changed*)

Exam SRM–Statistics for Risk Modeling

Exam PA–Predictive Analytics

VEE Mathematical Statistics

VEE Economics

VEE Accounting and Finance

*(Grade of B- or better required for VEE credit)*

Fundamentals of Actuarial Practice (FAP) eLearning Course

Associateship Professionalism Course (APC)

# SOA Credentialing: ASA (Associate of the Society of Actuaries)

KSU is designated **UCAP-Advanced Curriculum** by the SOA.

Exam P–Probability: MATH 40011

Exam FM–Financial Mathematics: MATH 30055

Exam IFM–Investment and Financial Markets: MATH 40059

Exam LTAM–Long-Term Actuarial Mathematics: MATH 40055-6

Exam STAM–Short-Term Actuarial Mathematics

Exam SRM–Statistics for Risk Modeling

Exam PA–Predictive Analytics

VEE Mathematical Statistics: MATH 40012

VEE Economics: ECON 22060-1

VEE Accounting and Finance: ACCT 23020, FIN 36063

*(Grade of B- or better required for VEE credit)*

Fundamentals of Actuarial Practice (FAP) eLearning Course

Associateship Professionalism Course (APC)



- ▶ Goal:
  - ▶ Pass 2–3 exams before graduating
  - ▶ Earn credential within 5 years of graduating
- ▶ Pass rates typically 49%
- ▶ Students grossly underestimate time and effort needed to pass
- ▶ Approx 100 hours of study per hour of exam
- ▶ Download syllabus and readings from SOA website
- ▶ Exam prep materials:
  - ▶ Sample questions and solutions on SOA website (Free)
  - ▶ ASM (Actuarial Study Materials) Manuals (Inexpensive)
  - ▶ ACTEX Learning Manuals (Inexpensive)
  - ▶ ACTEX GOAL Software
  - ▶ The Infinite Actuary (TIA) on-line materials (Expensive)
  - ▶ Coaching Actuaries on-line materials (Expensive)
- ▶ Register for exam on SOA site, then reserve time at Prometric Test Center

Internships: Must apply in the fall for the following summer



# Independent Research Project

**RESULTS**

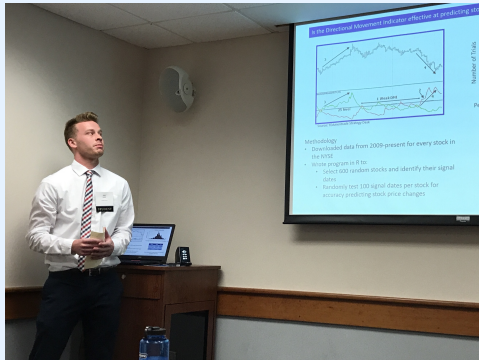
- Results are given in a range from low APV of expenses to high APV of expenses
- Estimates are for semi-private room costs in Ohio, and are sorted by male and female
- Females can consistently expect higher APV compared to male counterparts
- Lowest APV of costs would be for a male over the age of 95 at \$141,700

Low and High Cost Estimates

Age	Male Low	Male High	Female Low	Female High
65-64	117,800	111,800	178,800	168,200
65-74	203,800	209,800	279,800	268,800
75-84	178,700	208,800	268,800	267,700
85-84	178,800	208,800	268,700	267,700
95+	141,700	168,700	178,800	168,700

# SURE: Summer Undergraduate Research Experience

Apply in spring for summer 2022.



# Actuarial Math Club: Student presentations



# Actuarial Math Club: Recruiters



# Actuarial Math Club: 2021-22 Officer Elections

- ▶ President
- ▶ Vice President
- ▶ Secretary
- ▶ Treasurer
- ▶ Historian

## Candidates:

- ▶ Joey Weller
- ▶ Justin Moeller
- ▶ Dale Sentman
- ▶ Morgan Cheurco
- ▶ Alexis Lytle
- ▶ Hunter Brooks
- ▶ Nominations from the floor...

# YSU PME Student Conference: Saturday, February 19, 2022

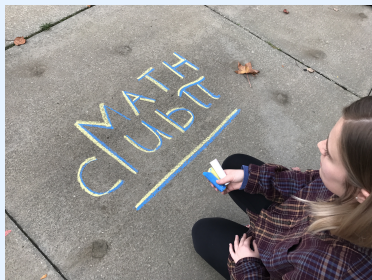
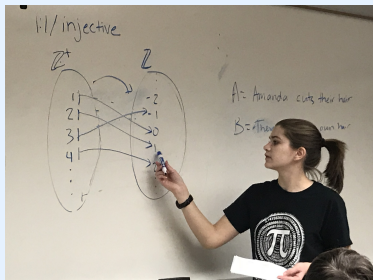




# MAA MathFest: August 3–6, 2022, Philadelphia, PA



# Math Club: Meetings 6:00–7:00 alternate Mondays, 156 MSB



# Your Future!

